



THE OZONE

GROUP PHUKET



LIVING YOUR ULTIMATE MODERN LUXURY VILLAS



THE OZONE
GROUP PHUKET

COMPANY PROFILE



THE OZONE
GROUP PHUKET

บริษัท ติ โอโซน กรุ๊ป ภูเก็ต จำกัด THE OZONE GROUP PHUKET CO., LTD.

The Ozone Group Phuket is a leading real estate company specializing in the development of high-end residential and investment properties. With a dedicated team of experienced professionals and a strong commitment to customer satisfaction, we strive to provide exceptional real estate experiences to our customers, ensuring the seamless execution of every project from concept to completion.



THE OZONE
GROUP PHUKET



MR. JUTA THEANSUKONT

Chairman of the Board – The Ozone Group Phuket Co., Ltd.

Mr. Juta is a local Phuketian and has more than 30 years of professional background in property development as a Chairman of the Board of Naiharn ReLife Condominium, Naiharn ReLife The Windy Condominium, Naiharn ReLife De Café, and Aticha-Villa Town. Additionally, he is the current Executive Committee of Phuket Real Estate Association (P-REA) and the Thai-Russian Chamber of Commerce (TRCC). Besides that, he also serves as Founder & CEO of Unique Profur, specializing in luxury interior design & build. The company has collaborated with the most prestigious property developers of the country.

Mr. Juta holds a High Vocational Certificate in Mechanical Engineering and Bachelor degree in Art and Design Management.



THE OZONE
GROUP PHUKET



MS. ATHITHAN THEANSUKONT

Chief Executive Officer – The Ozone Group Phuket Co., Ltd.

Ms. Athithan is a local Phuketian and has more than 20 years of professional background in property development as a CEO of Naiharn ReLife Condominium, Naiharn ReLife The Windy Condominium, Naiharn ReLife De Café, and Aticha-Villa Town. Additionally, she is the current Executive Committee of Phuket Real Estate Association (P-REA). She also was appointed as Financial Consultant for several property developers in Phuket. With her wealth of experience and obtained a mutual fund, brokerage, and landlord licenses. She was appointed as Senior Credit Retail & Financial Advisors of Siam Commercial Bank Public Company Limited (SCB) and Land & Houses Bank Public Company Limited (LHB).

Ms. Athithan is an effective leader with M.B.A. degree in Economics. Highly skilled banking and finance professional, participating in all aspects of investment, business development and asset management.



THE OZONE
GROUP PHUKET



MR. ILYAS CHUENCHUMSUP

Chief Operating Officer - The Ozone Group Phuket Co., Ltd.

Mr. Ilyas is a local Phuketian and accomplished Chief Operating Officer (COO) with a wealth of experience exceeding 10 years in the real estate industry, he has successfully completed numerous residential projects throughout his career. With deep understanding of architecture management principles, he formulates and executes strategies that maximize profitability and operational effectiveness.

As the COO, he develops and implements strategic planning, project management, feasibility analysis, and financial performance to optimize operational efficiency and effectiveness within the organization.



THE OZONE
GROUP PHUKET



MR. POKPONG SUTTIMALA

Project Manager - The Ozone Group Phuket Co., Ltd.

As a highly experienced civil engineer with over 20 years of expertise in construction buildings, hotels and resorts, his objective is to contribute to an organization that offers challenging opportunities for personal and professional growth. He aims to leverage his skills and knowledge to not only achieve individual success but also contribute to the organization's overall goals and objectives.

Mr. Pokpong is deeply committed to maintaining the highest standards of quality in every project he undertakes and ensuring the utmost attention to health, safety, and environmental considerations.



THE OZONE
GROUP PHUKET

CORE VALUE

SINCERITY

TRUST WORTHY



DETAIL

CUSTOMER FOCUS



THE OZONE
GROUP PHUKET

BRAND

Originally, our land was a serene and tranquil blooming lotus pond. enveloped by lush greenery , besides that, the name of the owner - **ATHITHAN** also means lotus. The lotus is a symbol of purity and enlightenment in many cultures. Amidst this captivating scenery that surrounds us, one can truly appreciate the invigorating sensation of natural fresh air.





THE OZONE
GROUP PHUKET

SALES GROWTH

Established in 2022, The Ozone Group Phuket has strong presence in the local and international real estate market, **achieving consistent sales growth over 1 year**, successfully attracting and retaining customers, surpassing industry benchmarks and gaining significant market share.

With a focus on quality, customer satisfaction, and market expertise, The Ozone Group Phuket has established itself as a **trusted brand** in the real estate industry within less than a year. Currently, we have 9 projects, catering to a wide range of customers' needs and preferences.



THE OZONE GROUP PHUKET

LAUNCH

SEP 2022

NOV 2022

DEC 2022



100%
1 MONTH

THE OZONE RESIDENCES PHASE I
CHERNGTALAY



90%

THE OZONE CONDOMINIUM
CHERNGTALAY



85%

THE OZONE RESIDENCES PHASE II
CHERNGTALAY



90%

THE OZONE GRAND RESIDENCES
CHERNGTALAY



50%

THE OZONE CAMPUS VILLA
THALANG

Update as of Sep, 2023



THE OZONE
GROUP PHUKET

FEB 2023

APR 2023

JUL 2023



Update as of Sep, 2023



THE OZONE
GROUP PHUKET

PROJECT OVERVIEW

PRIME LOCATION

Peacefully nestled amid lush nature, yet still conveniently connected. Located in the most prestigious residential areas in Phuket, with easy access to an abundance of facilities, we ensure that our valued residents enjoy the exclusive privacy, comfort and convenience.

- | | | | |
|-----------------------------------|---------|-------------------------------------|---------|
| ◆ Laguna Golf Courses | 1 min | ◆ Catch Beach Club | 15 mins |
| ◆ Central Porto De Phuket | 2 mins | ◆ Robinson Lifestyle Thalang | 17 mins |
| ◆ Boat Avenue Mall & Villa Market | 2 mins | ◆ UWCT International School | 20 mins |
| ◆ Bangtao & Layan Beach | 5 mins | ◆ Thanyapura Sports & Health Resort | 20 mins |
| ◆ Blue Tree Water Park | 10 mins | ◆ Phuket International Airport | 25 mins |





THE OZONE
GROUP PHUKET

THE OZONE RESIDENCES

Embrace the glorious warmth and comfort, The Ozone Residences, one-story villa comprises limited Modern Luxury villas. Absolutely spacious and fully functional layouts, large dining & kitchen area, open space living area with full length window, high ceiling providing cooling breeze retreats.





THE OZONE
GROUP PHUKET



THE OZONE RESIDENCES I

Total 14 units

- ◆ Land Plot : 334 sq.m.
- ◆ Built-Up Area : 277.6 sq.m.
- ◆ 3 Bed 4 Bath
- ◆ Swimming Pool : 3.6 x 9 m.

Start 25 MB

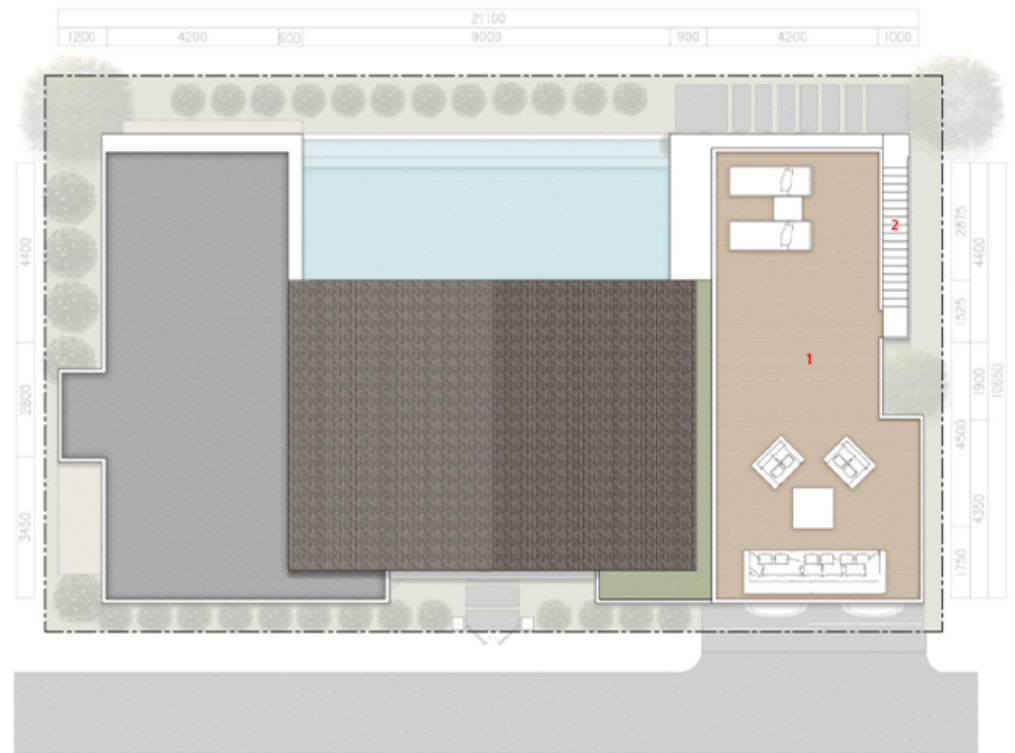


FLOOR PLAN

1ST FLOOR PLAN



2ND FLOOR PLAN



LEGEND

	Sq.m.		Sq.m.		
1	Parking	30.38	9	Bedroom 2	13.33
2	Foyer	2.16	10	Bathroom 2	6.45
3	Pantry and Dining	28.52	11	Bedroom 3	19.58
4	Living	21.34	12	Bathroom 3	5.9
5	Laundry	4.99	13	Pool terrace	25.87
6	Master bedroom	19.13	14	Swimming pool	32.18
7	Walk-in closet	6.08	15	Pump room	1.2
8	Master bathroom	9.33			

LEGEND

	Sq.m.	
1	Roof terrace	48.62
2	Stair	2.54

Grand total

277.60 Sq.m.



THE OZONE
GROUP PHUKET

THE OZONE RESIDENCES II

Total 8 units

- ◆ Land Plot : 465 sq.m.
- ◆ Built-Up Area : 329 sq.m.
- ◆ 4 Bed 5 Bath
- ◆ Swimming Pool : 3.2 x 11 m.

Start 28-32 MB



FLOOR PLAN



THE OZONE
GROUP PHUKET



LEGEND

	Sq.m.		Sq.m.
1 Parking	39.7	14 Terrace	3.0
2 Foyer	4.3	15 WIC	3.8
3 Bedroom 1	23.7	16 Bathroom 3	6.2
4 Bathroom 1	6.4	17 Master Bedroom	20.9
5 Pantry	11.4	18 WIC	8.2
5 Living and Dining	59.0	19 Master Bathroom	12.4
7 Laundry and Pump	4.2	20 Terrace	29.6
3 Powder Room	3.8	21 Swimming Pool	40.8
3 Bedroom 2	14.7	22 Pool Sala	8.0
3 Terrace	3.0	23 Outdoor Shower	1.0
1 WIC	3.8		
2 Bathroom 2	6.2		
3 Bedroom 3	14.7		
		Grand total	328.8 Sq.m.
		Green area	136.2 Sq.m.



THE OZONE
GROUP PHUKET

THE OZONE RESIDENCES IV

Total 12 units

- ◆ Land Plot : 380 - 452 sq.m.
- ◆ Built-Up Area : 285 sq.m.
- ◆ 3 Bed 4 Bath
- ◆ Swimming Pool : 3 x 9 m.

Start 27-30 MB



FLOOR PLAN



THE OZONE
GROUP PHUKET



LEGEND	Sq.m.
1 Garage	42.1
2 Service terrace	8.4
3 Utility	8.5
4 Foyer	6.9
5 Powder room	4.9
6 Kitchen	19.1
7 Dining	20.0
8 Living	19.3
9 Bedroom 1	20.0
10 WIC	3.5

LEGEND	Sq.m.
11 Bathroom 1	5.6
12 Terrace	33.5
13 Swimming pool	32.4
14 Bedroom 2	17.6
15 Bathroom 2	6.3
16 Terrace	2.4
17 Master Bedroom	19.2
18 WIC	6.4
19 Master Bathroom	8.5

Grand total 285 Sq.m.
Green area 95 Sq.m.



THE OZONE
GROUP PHUKET

THE OZONE GRAND RESIDENCES

Redefined timeless elegance design at The Ozone Grand Residences. The extraordinary luxurious masterpiece of a uniquely designed 4 bedrooms plus a multipurpose room with terrace, meticulously using only the finest materials. Nestled within the lush natural landscaping, greeted with natural light, fresh air, and soaring ceilings to exude a sense of relaxing serenity. Enjoy a private and superior level of living.





THE OZONE
GROUP PHUKET

THE OZONE GRAND RESIDENCES

Total 12 units

- ◆ Land Plot : 465 - 569 sq.m.
- ◆ Built-Up Area : 517 sq.m.
- ◆ 4 Bed 5 Bath + 1 Multifunctional room
- ◆ Swimming Pool : 3.5 x 12.7 m.

Start 33-45 MB



FLOOR PLAN

1ST FLOOR PLAN



LEGEND

	Sq.m.		Sq.m.
1 Parking	50.40	14 Terrace	8.00
2 Foyer	6.10	15 Pool Terrace	35.80
3 Powder room	3.30	16 Swimming Pool	43.70
4 Laundry	5.10	17 Pool Sala	11.50
5 Pantry	17.10	18 Outdoor Shower	8.90
6 Living and Dining	47.70	19 Pool Pump	3.20
7 Storage and Pump	15.10		
8 Bedroom 1	16.80	Total 1ST FL	317.00 Sq.m.
9 WIC	3.10		
10 Bathroom 1	6.20		
11 Bedroom 2	22.10		
12 WIC	6.30		
13 Bathroom 2	6.60		

2ND FLOOR PLAN



LEGEND

	Sq.m.		Sq.m.
1 Bedroom 3	22.50	Total 2ND FL	208.20 Sq.m.
2 WIC	6.50		
3 Bathroom 3	6.60	Grand total	525.20 Sq.m.
4 Terrace	16.40	Green area	235.00 Sq.m.
5 Master Bedroom	27.80		
6 Master WIC	17.60		
7 Master Bathroom	19.20		
8 Terrace	8.20		
9 Connecting	4.30		
10 Multi-purpose	34.70		
11 Rooftop Sala	31.20		
12 Stairs Hall	13.20		
13 Roof Slab			



THE OZONE
GROUP PHUKET

THE OZONE LUXURY VILLAS

A harmonious blend of breathtaking architecture design and nature ambient, with awe-inspiring interiors envisioned. The Ozone Luxury Villas, two-story villa comprises of 5 Modern Contemporary private luxury villas features four to five bedrooms with all ensuite bathrooms, walk-in closet, open space living area with full length window and high ceiling providing cooling breeze retreats, large dining & kitchen area, pool terrace, expansive swimming pool, lush garden, double-story sala, and covered parking.





THE OZONE
GROUP PHUKET

THE OZONE LUXURY VILLAS

Total 5 units

- ◆ Land Plot : 492 - 700 sq.m.
- ◆ Built-Up Area : 525 sq.m.
- ◆ 5 Bed 6 Bath
- ◆ Swimming Pool : 3 x 9.75 m.

Start 50 MB



FLOOR PLAN



THE OZONE
GROUP PHUKET

1ST FLOOR PLAN



2ND FLOOR PLAN



LEGEND

	Sq.m.		Sq.m.
1	36.78	16	7.07
2	9.03	17	7.13
3	6.80	18	5.45
4	26.01	19	5.97
5	11.56	20	12.76
6	6.26	21	12.82
7	6.26	22	0.95
8	9.09	23	9.10
9	15.62		
10	33.21	Total area	309.12
11	7.40		Sq.m.
12	14.63		
13	30.39		
14	18.98		
15	15.85		

LEGEND

	Sq.m.		Sq.m.
1	11.73	12	8.80
2	11.85	13	6.60
3	18.27	14	27.38
4	16.38	15	6.19
5	14.84	16	18.70
6	19.98		
7	19.08	Total area	216.14
8	18.88		Sq.m.
9	8.16	Grand total area	525.26
10	4.20		Sq.m.
11	5.10		



THE OZONE
GROUP PHUKET

THE OZONE CLUBHOUSE

Elevate your experience with the unparalleled amenities at **The Ozone ClubHouse**, the exclusive privileges and extraordinary clubhouse curated "just for residents" situated on 1,071 sq.m. land plot, complete with an option to unwind are endless; a spacious private lounge area, café, well-equipped fitness center, wine room, and expansive swimming pool fringed by the tranquil lotus pond to enhance your wellness lifestyle.





THE OZONE
GROUP PHUKET

THE OZONE CONDOMINIUM

Designed as an expansive living space and stunning unobstructed views in all directions that reflects the elegance of neighborhood surroundings. The Ozone Condominium, a modern luxury 8-story condominium comprises of 164 units. With 3 unit types, ranging from 1 Bedroom, 2 Bedrooms, and Duplex 2 Bedrooms featuring a seamless indoor-outdoor living experiences with full-height glass windows overlooking the Laguna Golf view, mountain view, and lush garden view, as well as granting plenty of natural light.

Become a resident and enjoy exclusive leisure facilities at **The Ozone Condominium**. An expansive 5x24 meters plus 4x13 meters L-shape swimming pool and well-equipped fitness center allow residents to **Stay Healthy** while enjoying the greenery views.

Start 5.8 - 15 MB



ROOM TYPE



THE OZONE
GROUP PHUKET

1 BEDROOM TYPE A
42 SQ.M.



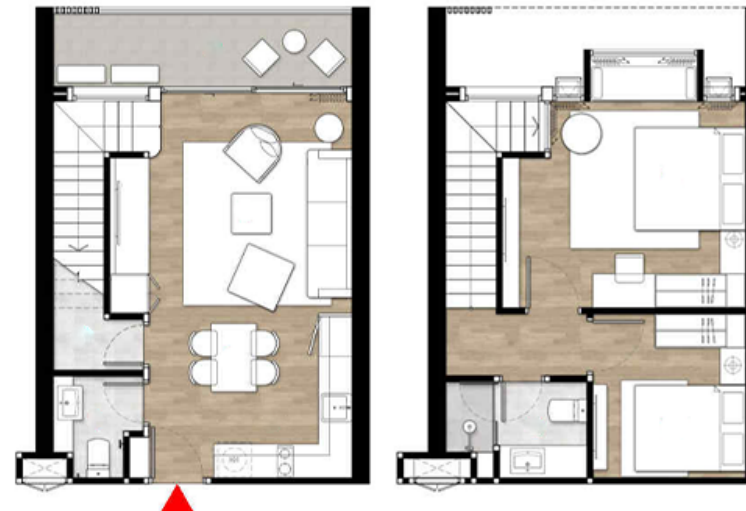
2 BEDROOMS
88 SQ.M.



1 BEDROOM TYPE B
51 SQ.M.



DUPELX
2 BEDROOMS
85-88 SQ.M.





THE OZONE
GROUP PHUKET

THE OZONE OASIS CONDOMINIUM

Discover a breathtaking urban Oasis nestled within the realm of luxury living, featuring top-tier wellness amenities and expansive lush green spaces.

The Ozone Oasis Condominium offers exceptional recreational options, highlighted by the breathtaking Oasis Garden, two premium tennis courts, a jogging track, a delightful kid's entertainment park & playground, and convenient pavilions for gatherings, all strategically positioned as central focal points. Additionally, there are cutting-edge gyms, and expansive 35-meter swimming pools. Residents can also relish panoramic views of the stunning Laguna Golf Courses from the upper floors.

Start 4 -18 MB



ROOM TYPE



THE OZONE
GROUP PHUKET



1 BEDROOM TYPE A
36 SQ.M.



1 BEDROOM TYPE B
40 SQ.M.



1 BEDROOM TYPE C
48 SQ.M.

ROOM TYPE



THE OZONE
GROUP PHUKET

**2 BEDROOM TYPE A
72 SQ.M.**



**2 BEDROOM TYPE B
81 SQ.M.**



**3 BEDROOM
122 SQ.M.**

OUR DESIGNER

RDM DESIGN GROUP

THE OZONE
GROUP PHUKET

“**RDM Design Group** was established in 2011. We are a leading design team of original ROOF, Co., Ltd. which is one of the leading architectural firms in Andaman region specializing in Hi-end residential development and trendy boutique hospitality projects.

We have worked with over 100 clients to design “Dream Architecture” throughout the Southeast Asia. With more than a decade of our experience in professional practice, we have learnt how to stay on the top of the trends and deliver world-class quality in design.

We strive to put a premium on places that reflect local and regional sensitivity, corporate culture, brand or whatever it is that makes a specific place special. We believe that successful buildings capture the spirit of their surroundings, even as they assert their own identity. They’re visually appealing, healthy, comfortable, flexible, secure and efficient, a pleasure to be in. As a result, they will pay their way and add real value for their owners and users.

”





THE OZONE
GROUP PHUKET

INTERIOR DESIGN



THE OZONE GROUP PHUKET

The interior design of The Ozone Group Phuket is a stunning showcase of elegance and luxury. Inspiration from a blend of **MODERN & CONTEMPORARY** styles, resulting in visually captivating atmospheres

With a unique modern & contemporary styles design inspired by the charm of traditional Thai that virtually defined by our unique signature "**PiKul flower**" elements and trellised patterns. With its' geometric shapes can often be seen decorating the walls and ceilings of grand palace.





THE OZONE GROUP PHUKET

With the utmost care and meticulous attention to detail. We carefully choose quality materials that functionality and durability while still providing a standout design that exudes elegance and impeccable taste.





THE OZONE GROUP PHUKET

Cozy yet Luxury design defined with its exquisite furnishings and high-quality materials, chosen with special care to provide the utmost prestigious experience.





THE OZONE
GROUP PHUKET

OUR SUPPLIERS

CRISTINA COTTO



KOHLER®



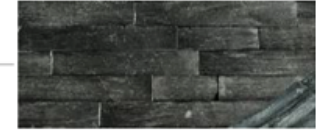
WOOD
DEN
วูด - เด็น

HÄFELE



THE OZONE
GROUP PHUKET

MATERIALS



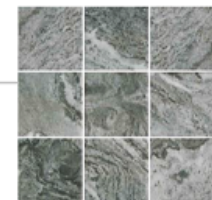
STONE WALL (EVEREST STONE)
CODE : EVS-019 BLACK SLATE



DECK (PRIMA PINE)
CODE : GOLD PLUS



TEXTURE COLOR (JORAKAY)
CODE : SAND STONE
/ 71 ASH GREY



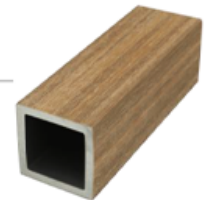
SWIMMING POOL (COTTO)
CODE : MT 4SR1
HIDEAWAY ALPINE



THE OZONE
GROUP PHUKET



**CEILING (WOOD VINYL 3"
CINNAMON)
COLOR : TEAK**



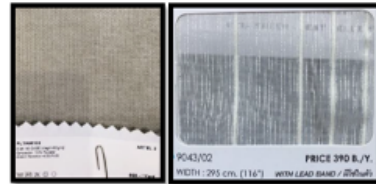
**LATH (MASIX WOOD)
CODE : CX-5050**



**COLOR (TOA)
CODE : 8295
COLOR : CAST IN STONE**



THE OZONE GROUP PHUKET



Curtain & Sheer

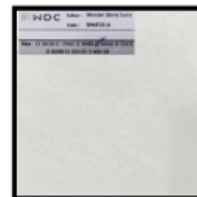
Geoluxe Marble : Amazonia



Laminate

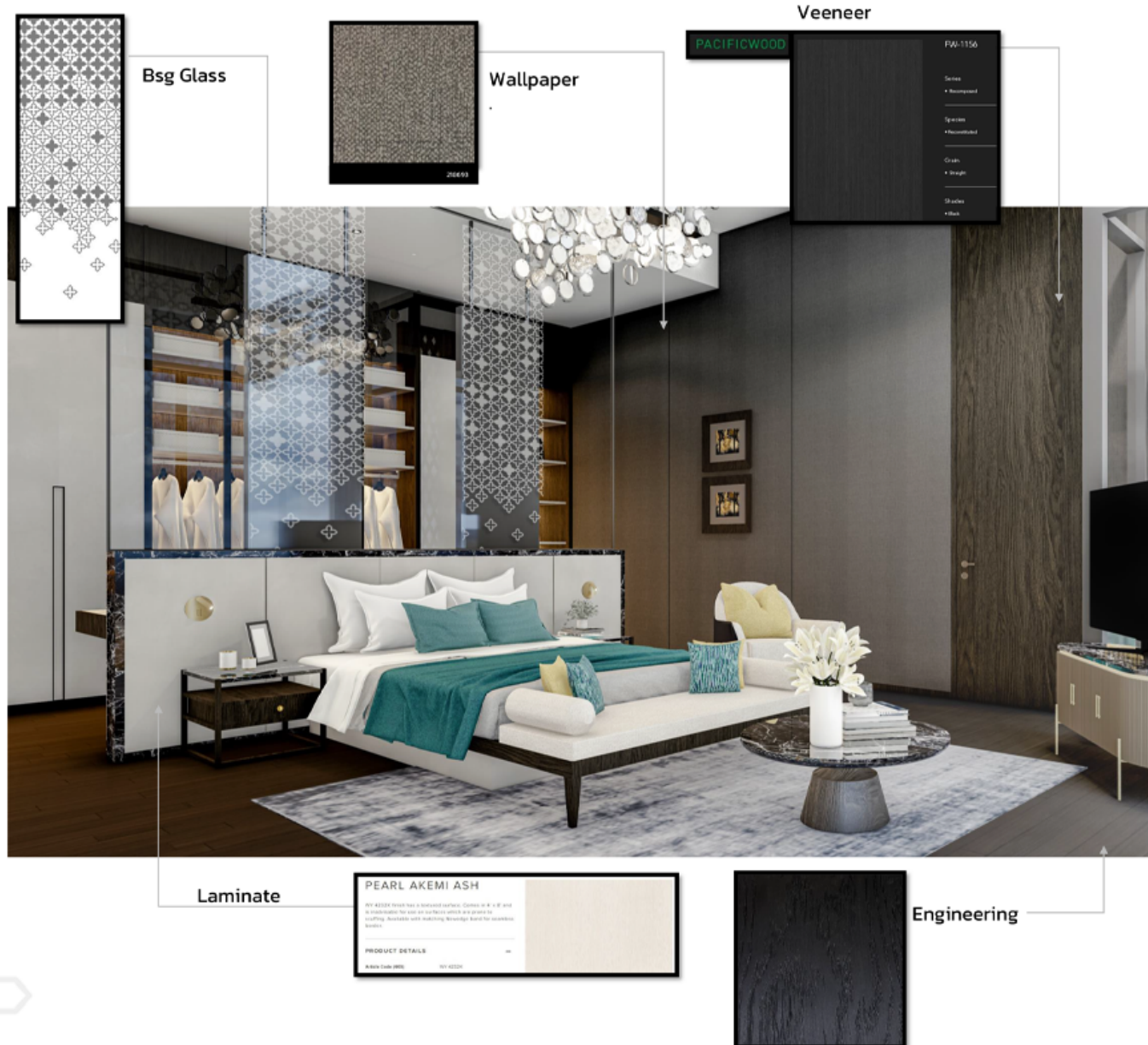


Floor Tile





THE OZONE GROUP PHUKET





THE OZONE

GROUP PHUKET

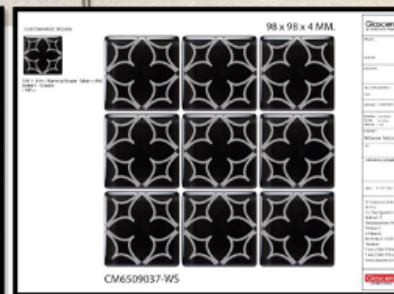
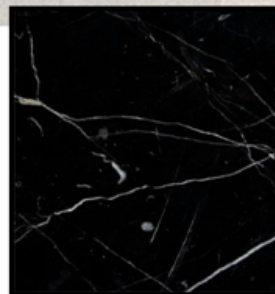


Cotto
GP M-STONE

PEARL AKEMI ASH
PRODUCT SERVICE

Laminate

Marble : Black Marquina



Mosaic By Imex



THE OZONE
GROUP PHUKET



RUSTIC CEDAR

SHINGLES ASPHALT ROOF
COLOR : RUSTIC CEDAR



Prima Pine
Gold Plus

DECK (PRIMA PINE)
CODE : GOLD PLUS



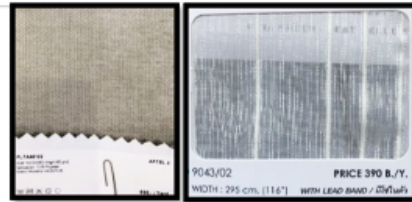
WEATHER WOOD

WALL CLADDING
MAXIS WOOD CX-002
COLOR : WEATHER WOOD



THE OZONE GROUP PHUKET

Curtain & Sheer



Engineering





THE OZONE

GROUP PHUKET

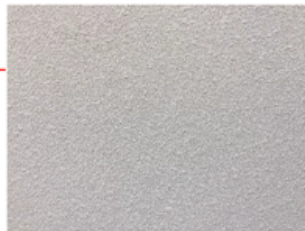


WALL
MAXIS WOOD CX-002EX
TEAK

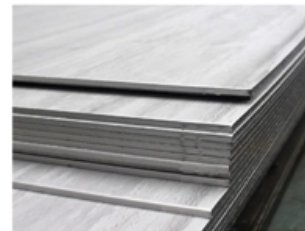


CEILING
WOOD VINYL 3"
CINNAMON

TEXTURE COLOR



STEEL PLATE 5 mm.





THE OZONE

GROUP PHUKET

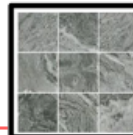


MARBLE RENDER SCG
EMB 521
WHITE



EMB 521

SWIMMING POOL TILE
MT 4SRI-HIDEAWAY ALPINE GREY
(PACK10) 10



MAXIS WOOD
DECK 140
SIZE : 21x140 mm.
with 3mm. Gap



THE OZONE
GROUP PHUKET

SECURITY, SUSTAINABILITY & INNOVATION



THE OZONE
GROUP PHUKET

SUSTAINABILITY

The Ozone Group Phuket has made significant strides in sustainability by incorporating various eco-friendly features.

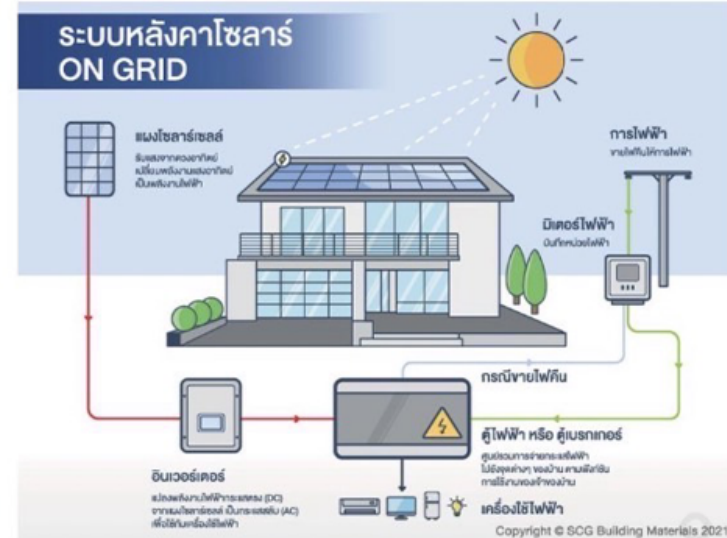
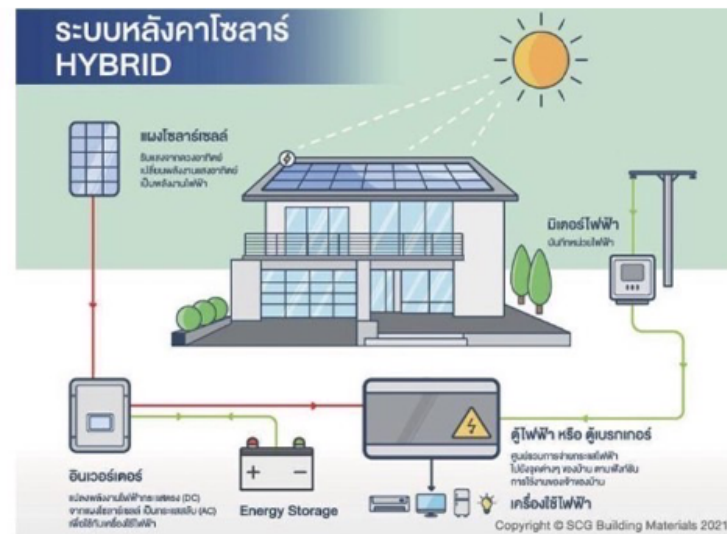
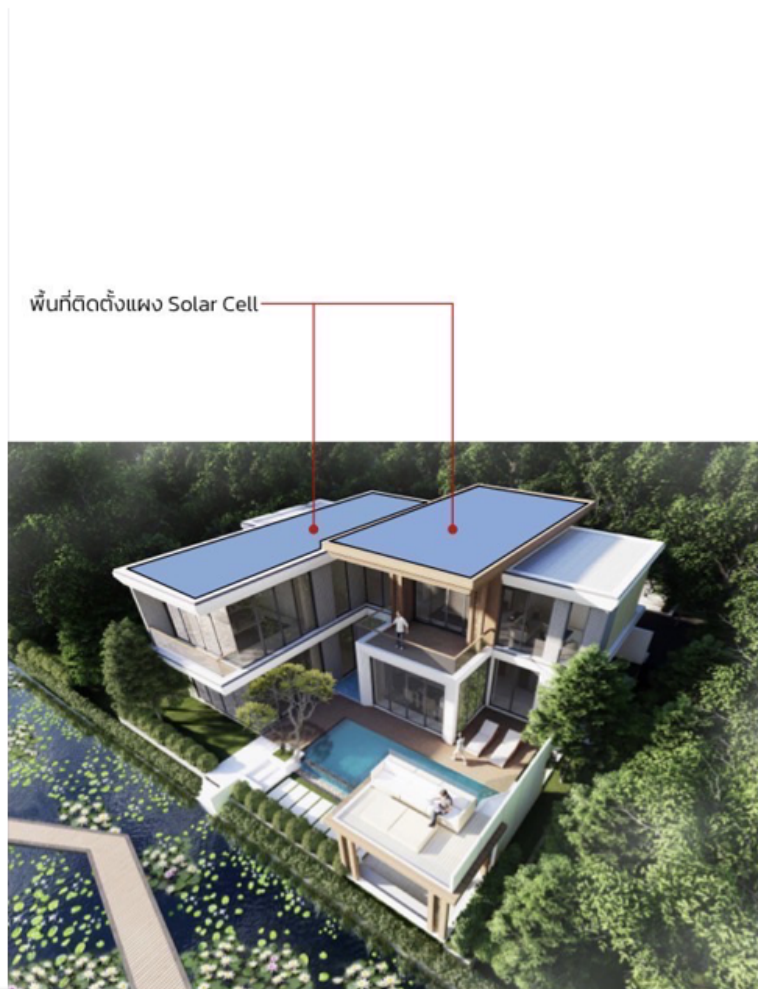
Designed to capture an abundance of natural light and the winds blow from East towards West, bringing natural fresh air through large windows of your exclusive villa not only for enhances the visual appeal but also reduces the need for artificial lighting and ventilation during daylight hours, contributing to energy efficiency.





SOLAR CELLS

The thoughtful design incorporates a flat roof that has been strategically optimized to accommodate solar panels that approach enables the customer to take full advantage of solar power, reducing their carbon footprint and enjoying the benefits of sustainable, cost-effective electricity generation.

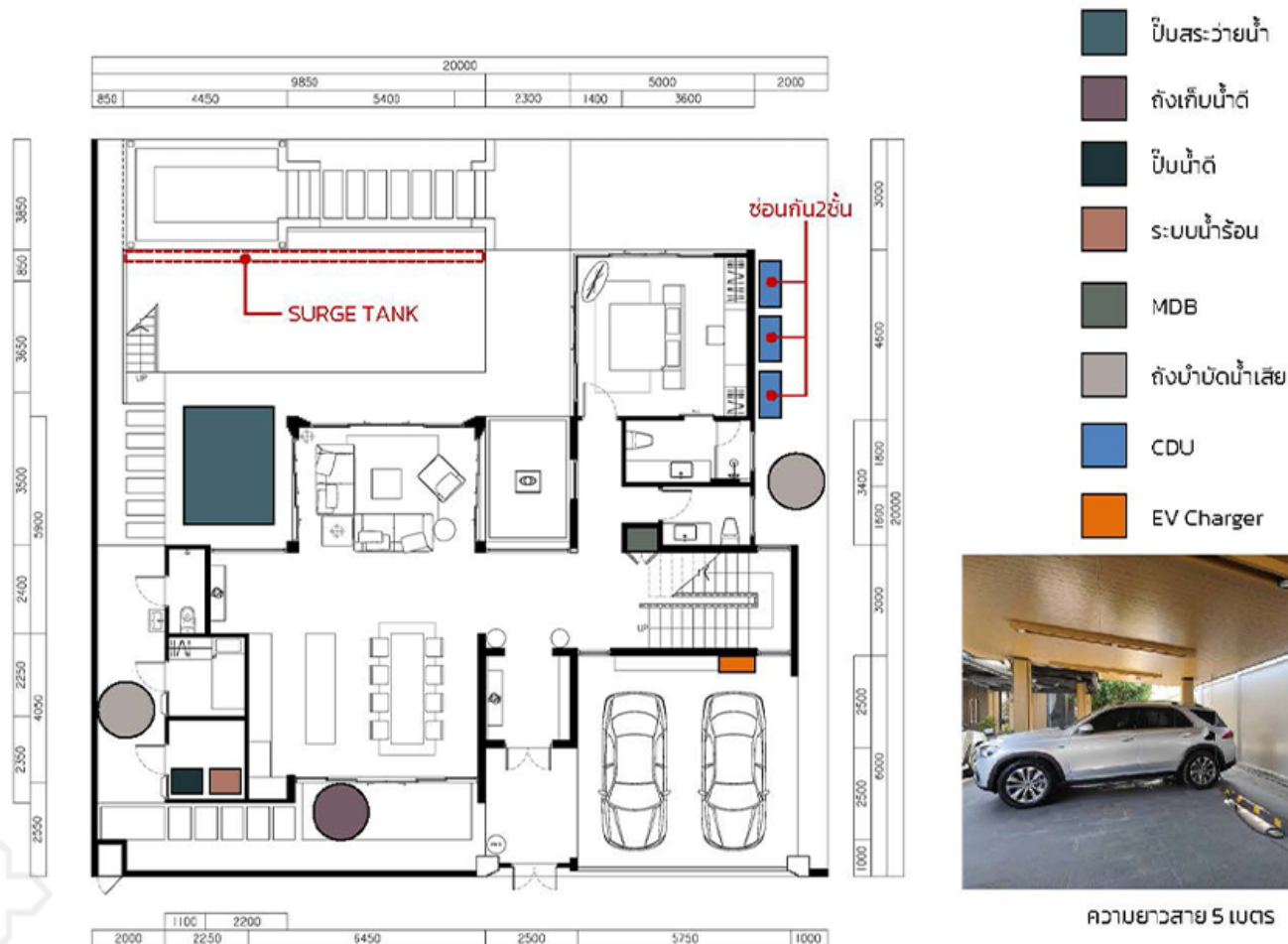


ELECTRIC VEHICLE (EV) CHARGER



THE OZONE
GROUP PHUKET

By facilitating the adoption of electric vehicles through the installation of EV chargers, we contribute to reducing carbon emissions and promoting a cleaner transportation system. Electric vehicles have lower emissions compared to traditional vehicles, and by providing the necessary charging infrastructure, we actively support the transition to a more sustainable and greener future.



ความยาวสาย 5 เมตร



SECURITY & INNOVATION

The main entrance incorporate the **Keycard Access Control System** to enhances security and provides a seamless and efficient entry experience for authorized individuals. Additionally, our projects utilizes **Digital Door Locks** that use advanced authentication methods such as PIN codes, key cards, biometric recognition (fingerprint), and smartphone-enabled access. We ensures heightened level of security, convenience and technological sophistication.





THE OZONE
GROUP PHUKET

PREMIUM AIRCARE PAINT

Experience clean and fresh air with our authentic acrylic paint infused with Japanese technology. It purifies the air, inhibits viruses and bacteria, and absorbs harmful substances like formaldehyde, making it safe for you and your loved ones.

**ขอขอบคุณโครงการ
THE OZONE GROUP PHUKET**
สำหรับการเลือกสรรผลิตภัณฑ์สีคุณภาพสูงสุด

NIPPON PAINT WEATHERBOND
สีน้ำทาภายนอก เพื่อบ้านสวย เหนียวทนกว่า 15 ปี +

NIPPON PAINT AIRCARE
สีน้ำทากายใน เพื่ออากาศสะอาด สุขภาพดี

WEATHERBOND **AirCare**



รังสรรค์บ้านสวยสมบูรณ์แบบ สະถ่อนเอกลักษณ์แห่งความสง่างาม
ด้วย **NIPPON PAINT WEATHERBOND**
นวัตกรรมสีคุณภาพสูงสุด
ปกป้องเหนียวทนกว่า 15 ปี+
หนึ่งเดียวจากญี่ปุ่น

-  พิสูจน์ตัวเอง 60 ชาติด้วย ทนทานยาวนานกว่า 15 ปี ทนต่อปัญหาสีกร่อนบนไม้ปาร์เก้
-  ยึดทนสูง ป้องกันน้ำและความชื้นเข้าผนัง ทนต่อปัญหาสีต่างๆ
-  สกัดองศาสิ่งสกปรกได้ 95.1% และดูดซับพิษเคมีได้ถึง 12 ชนิดหลายสิบ
-  ใช้ง่ายในมากกว่า 400,000 สอน และสีตกในมากกว่า 200,000 สอน



สานต่อความผ่อนคลาย ด้วยนวัตกรรมอากาศภายในสะอาด
กับ **NIPPON PAINT AIRCARE** สีที่เคลือบทุกมุมหมายใจ
หนึ่งเดียวพร้อมเครื่องหมาย
GREENGUARD GOLD CERTIFICATION
โดยสถาบัน UL* สหรัฐอเมริกา

-  พัดอากาศให้บริสุทธิ์ พร้อมดูดซับสารพิษสำคัญ อย่างฟอร์มาลดีไฮด์ ด้วยเทคโนโลยี Active Carbon
-  ยับยั้งเชื้อไวรัสและแบคทีเรียบนผนัง ด้วยเทคโนโลยี Silver-Ion
-  เช็ดล้างทำความสะอาดได้มากกว่า 200,000 ครั้ง ด้วยเทคโนโลยี Anti-Stain





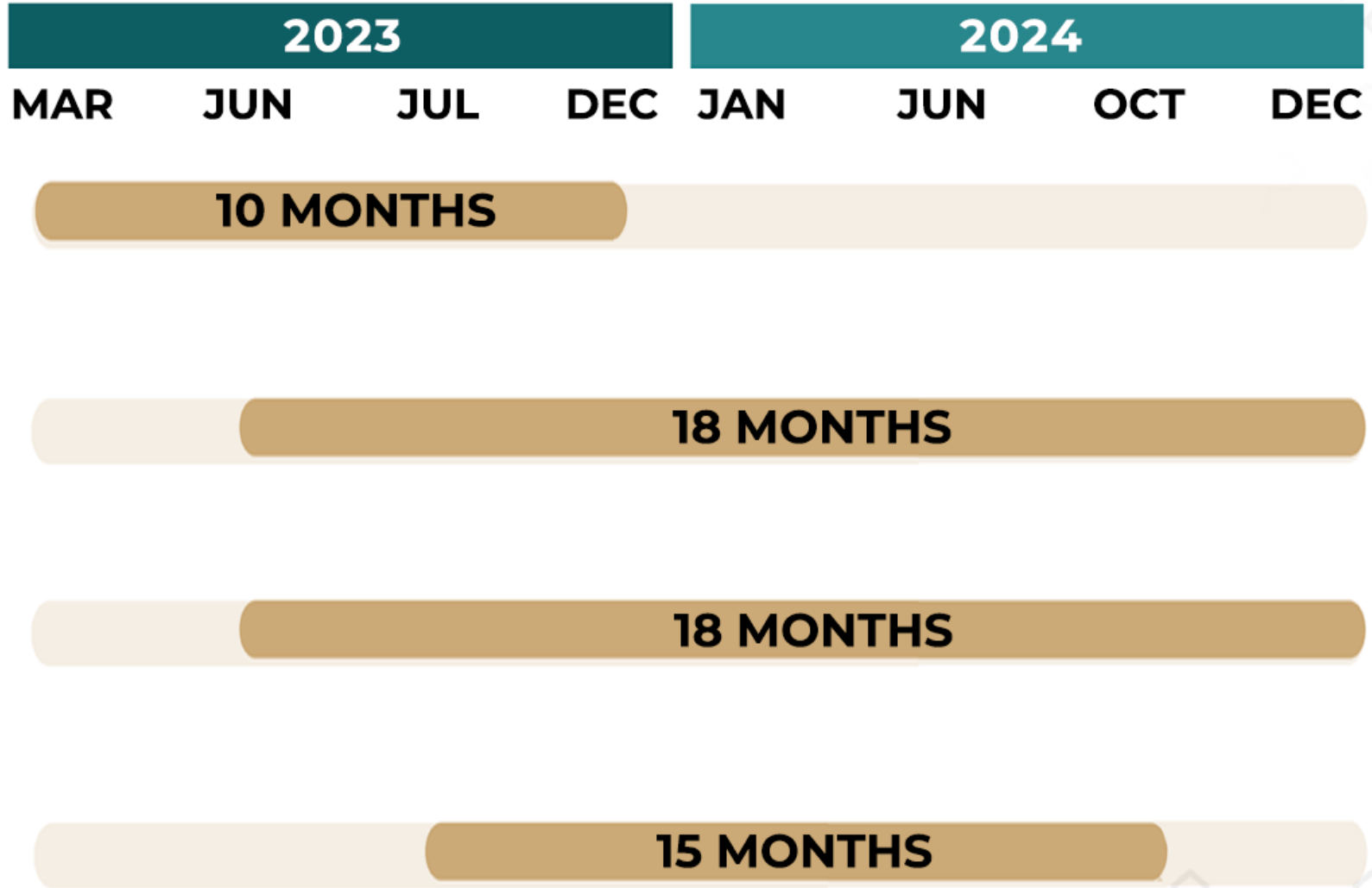
THE OZONE
GROUP PHUKET

CONSTRUCTION TIMELINE & SALES PROGRESS

CONSTRUCTION TIMELINE



THE OZONE
GROUP PHUKET





2023			2024				2025		2026
JUN	AUG	DEC	JUN	OCT	NOV	DEC	JAN	FEB	MAR



THE OZONE CAMPUS VILLA



20 MONTHS



THE OZONE RESIDENCES IV



15 MONTHS



THE OZONE LUXURY VILLAS



18 MONTHS



THE OZONE OASIS CONDOMINIUM



21 MONTHS



The Ozone Condominium

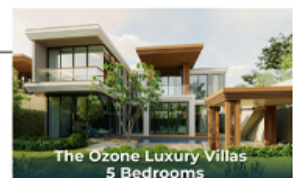
The Ozone Grand Residences

The Ozone Residences Phase I

MASTER PLAN



THE OZONE
GROUP PHUKET



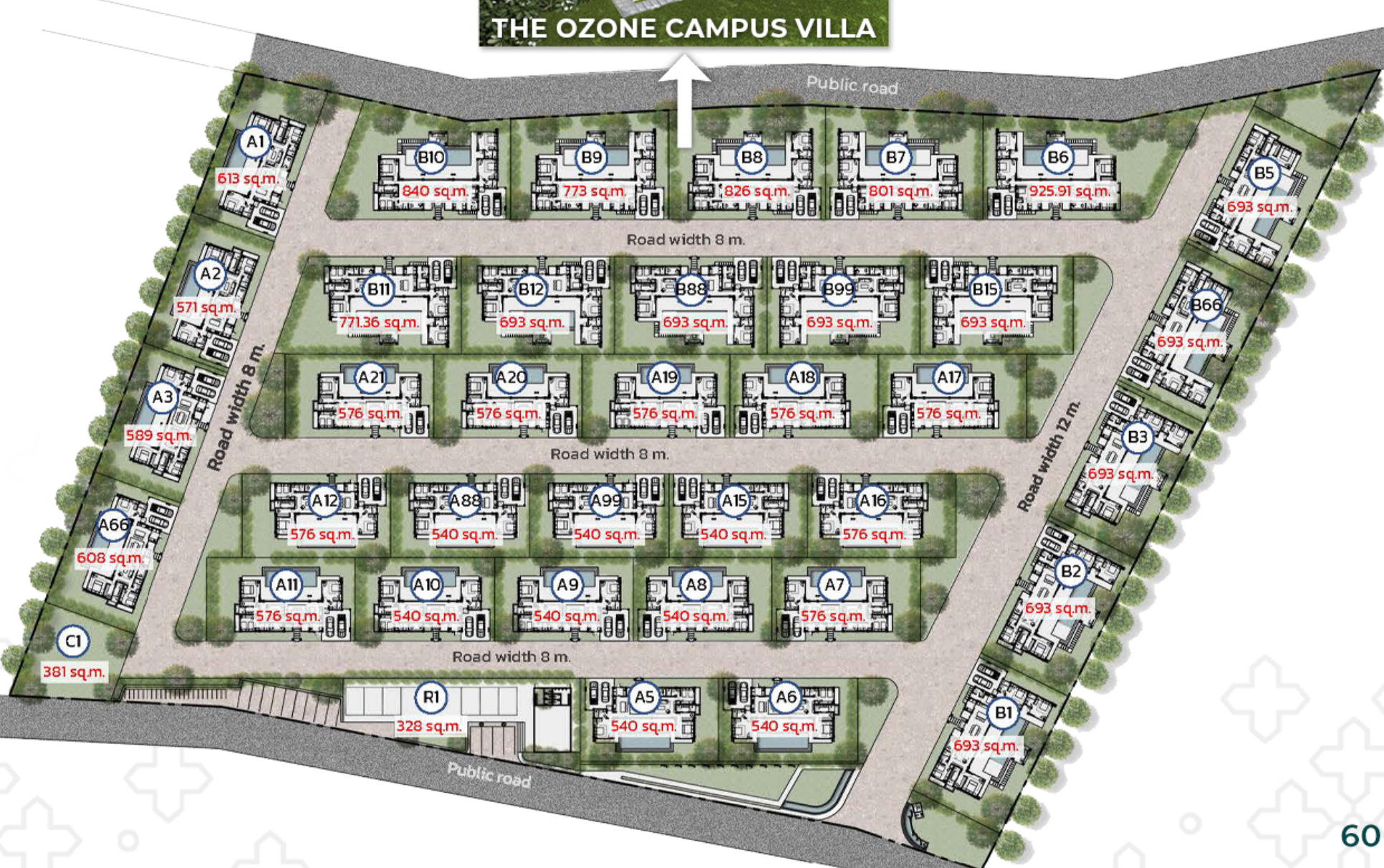
Laguna Golf Course



*All pictures shown are for advertising purpose only.



THE OZONE CAMPUS VILLA



THANK YOU



THE OZONE
GROUP PHUKET

ADDRESS

The Ozone Group Phuket (Headquarter)
88/88 Moo 4, Chergntalay, Thalang District,
Phuket 83110, Thailand

CONTACT US

+66(0)62 426 4197 (TH)

+66(0)62 426 3928 (EN/CN/RU)

Sales@theozonegroupphuket.com

www.ozonephuket.com



THE OZONE GROUP PHUKET

FOLLOW US

